



equivital

TRAINING & RESEARCH PRODUCT RANGE

Real-time biometric data capture, smart data management, analysis and secure data storage.

Equivital training and research products combine world-class human performance monitoring capability with clinical-grade data quality.

Designed for use across multiple applications and a variety of use cases, the products combine usability and flexibility to meet the needs of user physiological research requirements.

Key use cases

- Sport
- Healthcare
- Pharmaceutical
- Research
- Vital Signs Monitoring
- Clinical Research
- Activity & Energy Expenditure Research
- Sleep Research
- Human Performance Research
- Thermal
- Aerospace

Unlock the power of your data

Two shoulder straps ensure that the eq02+ LifeMonitor always stays in place, even during high ambulation.

Seamlessly integrated respiratory sensor and sweat optimised ECG electrodes ensure high accuracy data collection.



The LifeMonitor includes a medical grade infrared thermometer that measures temperature every 15 secs and a high resolution tri-axis accelerometer providing data for activity monitoring and gait analysis.

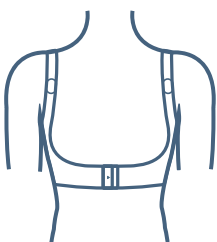
Benefits

- End to end solution for physiological sensing, data management and data visualisation
- Simple, streamlined data management solution ensuring higher controls for data quality at high volume
- Flexible configuration with accessory sensors to allow you to tailor your research studies
- For use in a variety of research cases

How it Works

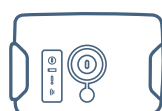
Training & Research

Data Collection



Sensor Belt

Data Storage



SEM

Data Download



Equivital Manager

Data Export



Export to CSV/Excel



The Sensors

eq02 Sensor Belt

Product code: EQ-02-B3-S (X) EQ-02-B4- S (X)

The eq02+ LifeMonitor is a multi-parameter body-worn sensor for logging and transmitting mobile human performance data.

The sensor belt features a sophisticated system of sensors and electrodes, which is embedded in a breathable and lightweight fabric which is comfortable for long term use.

The unisex belt is compatible with all types of body shapes, the two-shoulder strap ensures high-quality measurement of physiology even when the wearer is engaged in strenuous physical activity and rapid movement.

Available sizes: 1-9 (Circumference at xipher sternum: 29 - 47 in / 74 - 119cm)

Core temperature sensors

Product code: EQ-BCAP-PIL-01

Capture and analyse core body temperature data with partner products that work seamlessly with Equivital's vital sign monitoring solution; for clinical trials, heat (hot/cold) related occupational investigations and sleep/circadian rhythm studies.

Core pills from BodyCAP integrate with the Equivital software offering data in a single file for download and analysis.



The SEM

Product code: EQ-02-SEM-012

The Equivital eq02 SEM is a world leading multi-parameter ambulatory monitoring device that monitors and intelligently processes physiological data captured from the human and is able to transmit this data wirelessly.

The SEM docks into a cradle on the left hand side of the sensor belt where it processes, stores and transmits physiological data.

The SEM weighs 38g and has been designed and optimised for long wear.



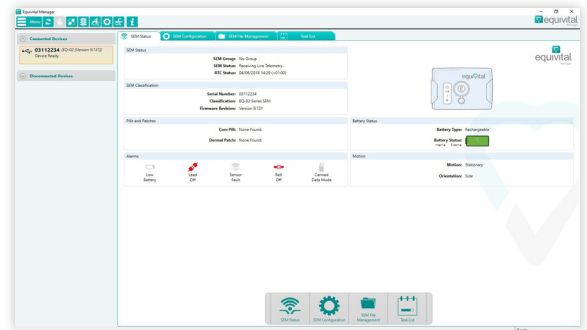
Software

Equivital Manager

Product code: EQ-SW-12

Equivital Manager is a software application for viewing SEM status information, downloading and splicing SEM files, pairing Bluetooth ancillaries and extracting data to CSV or Excel files.

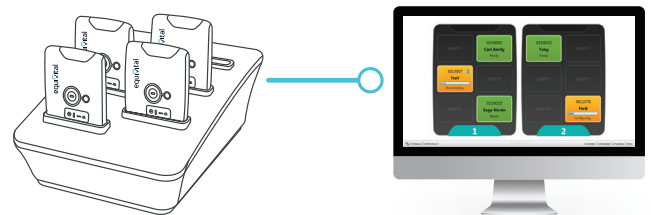
It is particularly useful for managing data and configuring a small number of SEMs, over USB.



Equivital Qiosk

Product code: EQ-SW-QSK-01

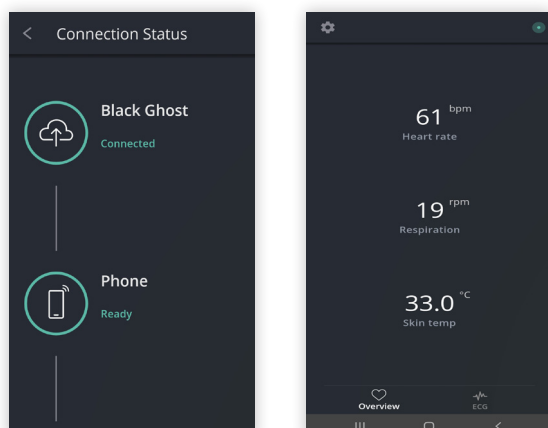
Equivital Qiosk is a software application that is intended for use in clinical trials and Black Ghost deployments where multiple SEMs and larger amounts of data need to be managed. It has a pre-configured set up for configuring and downloading data from a SEM, which is initiated without the need for user interaction. Data can automatically be uploaded to a local or remote database in a custom extract format when necessary. This is especially suitable where you need to maintain a consistent operating protocol between multiple researchers, sites or subjects.



eqView Mobile

Product code: EQ-SW-EQV-MOB-A-3

eqView Mobile is an Android app that allows data from a SEM to be viewed in real time. It requires a one to one connection with the SEM over Bluetooth. Key data including ECG can be viewed on the app and transmitted on to either eqView Professional or Black Ghost.



eqView Professional

Product code: EQ-SW-EQV-P-1

eqView Professional is a software tool for viewing live data including ECG and respiratory waveforms.

Subjects are assigned sensors, multiple sensors can be time synchronised and session event markers can be created during the session.

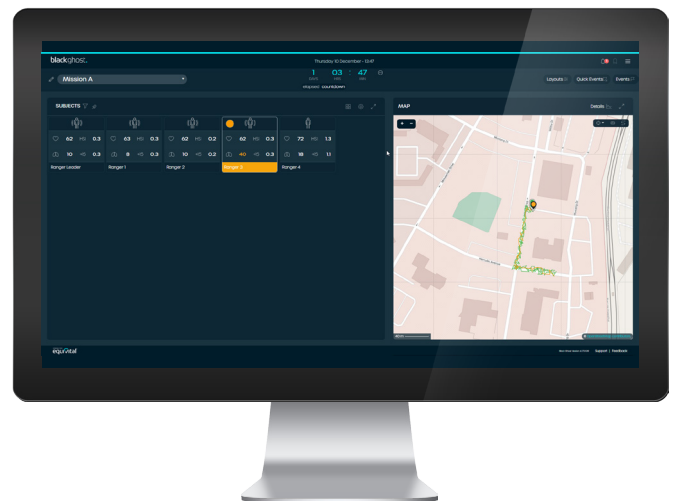


Black Ghost

Product code: EQ-SW-BG-01

Black Ghost is a web application tailored to the needs of CBRN, military and emergency first response users.

It combines SEM and location data enabling small and large teams to be monitored in training or deployment missions.



System Developers Kit (SDK)

Product code: EQ-SDK-URIN-00 & EQ-SDK-URIJ-00

Supported by our excellent in house team, Equival offers developers a choice of Android, .NET and Java SDKs.

These are designed to allow developers the ability to embed Equivalant eq02+ LifeMonitor data into their own applications.



Partnerships

Software partnerships

We have partnered with AdInstruments with ADI Labchart and VivoSense to continue our commitment to offer accurate data that can be exported, viewed and analysed into other software provider's systems simply and easily.



Sensor partnerships

Capture an even greater range of physiological data with additional sensors that work with the eq02+ LifeMonitor solution.

Our eq02+ LifeMonitor can be paired with our partners' products including dermal patches from VivoSense, the BodyCAP eCelsius core temperature pill and the Nonin Xpod, providing oxygen saturation and photoplethysmography (PPG) waveform information.



Accessories

A range of accessories to suit your needs

Enhance your data capturing capabilities with Equivital's range of accessories that connect to the eq02+ LifeMonitor solution.

These include multi-SEM docking and downloading stations, belt extenders and battery packs to prolong the use of the eq02+ LifeMonitor.

Visit <https://www.equivital.com/products/accessories> for the full accessories product range.



Support

Support options to suit your needs

Equivital has multiple ways to assist you. A team of experts are on hand, either on the phone, over email or via our comprehensive web support system. Here, we have a library of support FAQs, articles, videos and step-by-step guides to assist you in setting up and getting the most out of your data solution.

Visit <https://support.equivital.com> to find out more.